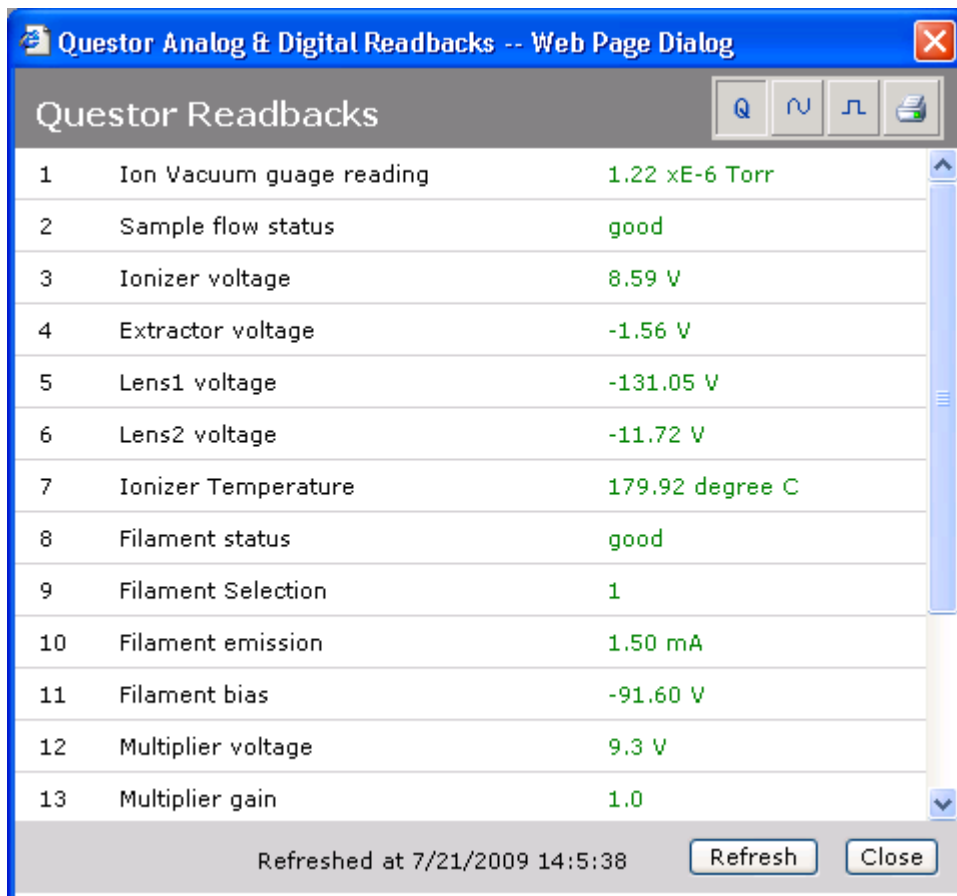


New Features

Diagnostic Mode:

- An excellent troubleshooting tool that provides the user the ability to quickly evaluate internal read backs to identify unforeseen issues in the system
- Real-time display of the Analog, Digital and Questor read backs
- Limits downtime
- On/Off feature allows the system to operate quickly when not in Diagnostic Mode



| Index | Readback Name | Value |
|-------|--------------------------|-----------------|
| 1 | Ion Vacuum gauge reading | 1.22 xE-6 Torr |
| 2 | Sample flow status | good |
| 3 | Ionizer voltage | 8.59 V |
| 4 | Extractor voltage | -1.56 V |
| 5 | Lens1 voltage | -131.05 V |
| 6 | Lens2 voltage | -11.72 V |
| 7 | Ionizer Temperature | 179.92 degree C |
| 8 | Filament status | good |
| 9 | Filament Selection | 1 |
| 10 | Filament emission | 1.50 mA |
| 11 | Filament bias | -91.60 V |
| 12 | Multiplier voltage | 9.3 V |
| 13 | Multiplier gain | 1.0 |

Refreshed at 7/21/2009 14:5:38



Multiplier Auto-Gain:

- A must for any application using the multiplier option
- Quickly sets the gain of the multiplier to a selected value
- Uses Binary bi-section to obtain a quick and accurate multiplier voltage
- No more math and no more guess work...

The screenshot shows a Windows-style dialog box titled "Auto Gain -- Web Page Di...". The dialog has a green header bar with the text "Auto Gain Configuration". Below the header is a table with four rows of input fields. The first row is for "Mass" (value 36) and "Start" (value 1300). The second row is for "Gain" (value 1000) and "End" (value 2000). The third row is for "Delta" (value 10) and "Step" (value 25). At the bottom of the dialog are two buttons: "Run" and "Cancel".

| | | Voltage | |
|-------|------|---------|------|
| Mass | 36 | Start | 1300 |
| Gain | 1000 | End | 2000 |
| Delta | 10 | Step | 25 |

Run Cancel



Stream Evaluator:

- Gives the user the ability to evaluate new streams and help select the proper mass/charge ratios needed to identify compounds
- Generates the expected Relative Interference Factors (RIF)
- Generates the expected Relative Standard Deviation (RSD) values
- Creates tables to assist in the selection of m/z ratios:
 - o Relative Intensity Spectra
 - o Concentration Scaled Spectra
 - o Relative Interference Factor
 - o Relative Standard Deviation
- Side-by-side viewing for easy comparison
- Has the ability to quickly create useable methods from the information compiled

The screenshot shows the Questor V Client Application interface in Microsoft Internet Explorer. The browser address bar shows the URL: `http://localhost/Questor5/asp/home.asp?scr=1024`. The application has a navigation menu with tabs for Home, Configuration, Tuning, Survey Scan, Analysis, Sequencer, Results, Event Log, and Compounds. The current view is the Stream Evaluator, which displays a table for Stream Composition and two side-by-side spectral comparison tables.

| Name | Est Concentration (%) | Sensitivity | Detection Mass | RIF | RSD(F) | RSD(M) |
|----------------|-----------------------|-------------|----------------|--------|--------|--------|
| Nitrogen | 78 | 1.000 | 28 - 100.0 | < 0.01 | 0.0347 | . |
| Oxygen | 20.9 | .980 | 32 - 100.0 | < 0.01 | 0.0677 | . |
| Argon | 1.0 | 1.500 | 40 - 100.0 | < 0.01 | 0.25 | . |
| Carbon dioxide | 0.0350 | 1.860 | 44 - 100.0 | < 0.01 | 1.2 | . |
| Water | 0.5 | .800 | 18 - 100.0 | < 0.01 | 0.4841 | . |

View options: Relative intensity spectra, Concentration scaled spectra, Relative interference factor, Relative standard deviation

| Relative Intensity Spectra | | | | | | Concentration Scaled Spectra | | | | | |
|----------------------------|-------|-------|-------|----|----|------------------------------|---------|--------|---------|----|--|
| Name | 14 | 15 | 16 | 17 | 18 | Name | 14 | 15 | 16 | 17 | |
| Nitrogen | 5.000 | 0.020 | . | . | . | Nitrogen | 3.9 | 0.0156 | . | . | |
| Oxygen | . | . | 10.00 | . | . | Oxygen | . | . | 2.0482 | . | |
| Argon | . | . | . | . | . | Argon | . | . | . | . | |
| Carbon dioxide | . | . | 10.00 | . | . | Carbon dioxide | 0000521 | . | 0.00651 | . | |

Extrel CMS, LLC 575 Epsilon Drive, Pittsburgh, PA 15238

Tele: 412-963-7530

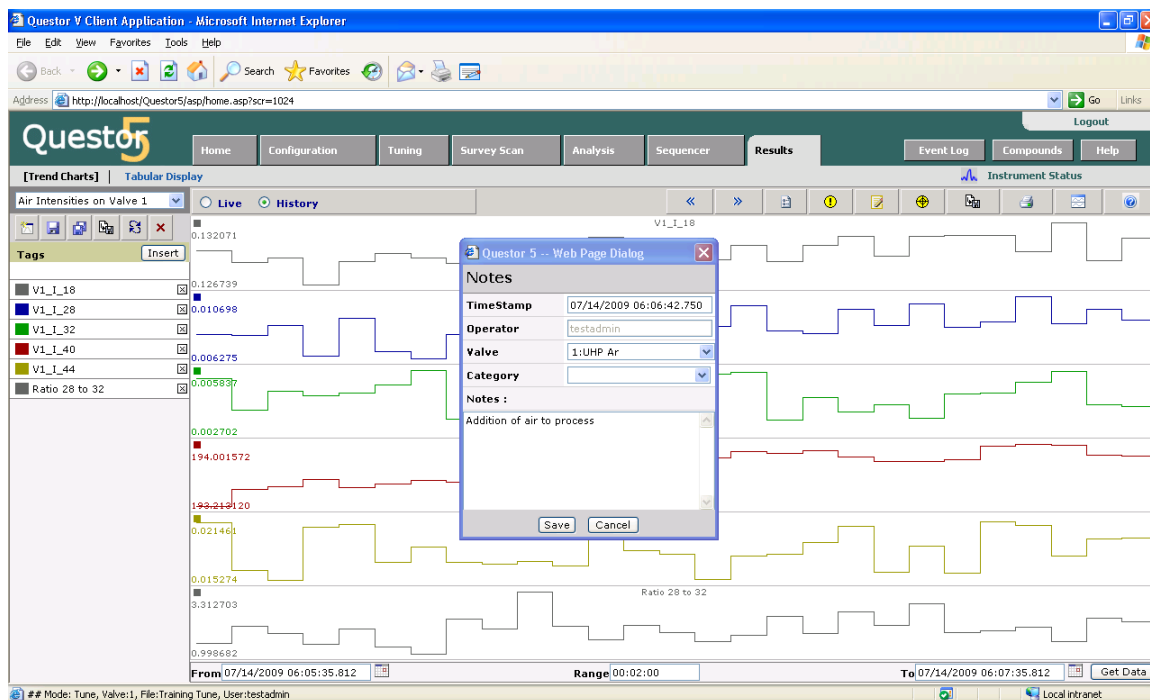
Fax: 412-963-6578

www.extrel.com



Trender Notations:

- The Trender feature allows the user to add notations directly to the Trend Chart to mark process changes or points of interest
- User-friendly dialog box with unlimited characters spacing
- Notations can be quickly recalled if necessary
- Important feature for customers with pilot plants and unknown processes



Extrel CMS, LLC 575 Epsilon Drive, Pittsburgh, PA 15238

Tele: 412-963-7530

Fax: 412-963-6578

www.extrel.com



Improved Features

- Library
- Tabular Display
- Analysis Trender
- Sequencer
- Survey Scan

For more information contact Extrel CMS at:

Telephone: (412) 967-5754

Fax: (412) 963-6578

Email: info@extrel.com

Extrel CMS, LLC 575 Epsilon Drive, Pittsburgh, PA 15238

Tele: 412-963-7530

Fax: 412-963-6578

www.extrel.com