

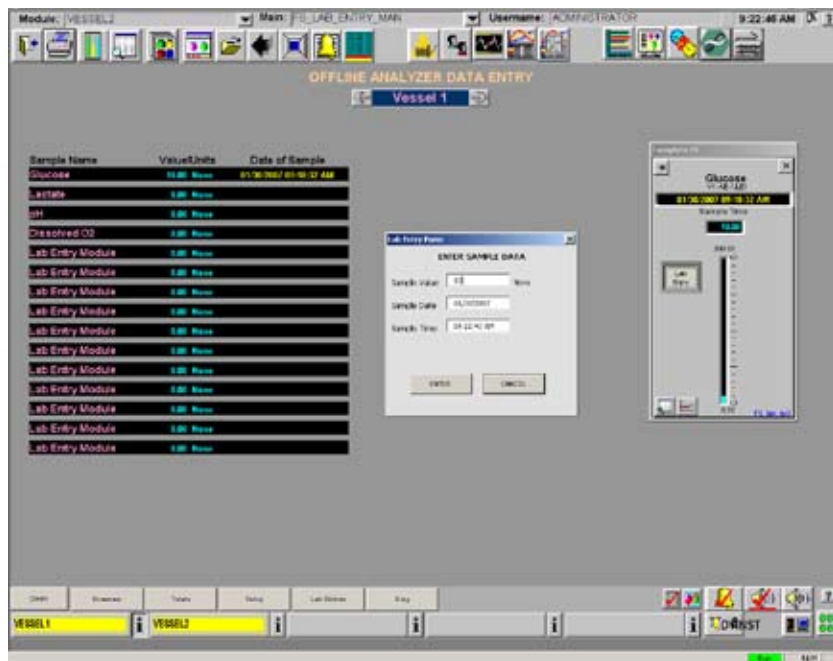
Features

- Supports manual and/or automated collection of process data with user-defineable min and max values
- Data is captured in DeltaV Historian
- Recorded process data can be used to change feed strategies, standardize in-situ sensors
- Can record hundreds of process data points in a 21 CFR Part 11 compliant format
- Enabled for easy interface to 3rd-party devices

Offline Data Entry

TruBio® DV supports both manual as well as automated collection of process data from off-line analytical instruments. This off-line data is recorded in the DeltaV historian where it is time/date stamped, made available as both a real-time and historical trend, and placed in the event log. TruBio DV also allows recorded process data to be utilized in process control strategies such as nutrient feed, gas management, standardization of in-situ sensors and more.

Manual data is defined to be any data that is entered by an individual into TruBio DV. The standard configuration supports the manual placement of up to fifteen (15) process data points. This number can be increased as needed by the process implementation.



Data Entry Screen

Automated data is defined to be any data that can be entered automatically through the use of either OPC or serial technology into TruBio DV. DataConnector allows third party analyzer output to automatically populate the off-line data entry table via an OPC interface; TruConnect devices can allow third party devices having serial output to communicate with the off-line data entry form.

DataConnector

Nova BioProfile 400

Nova FLEX

Finesse Solutions, LLC
3350 Scott Blvd, Bldg 1
Santa Clara, CA 95054

Finesse Solutions AG
Via Sogn Gieri 27a
CH-7402 Bonaduz
Switzerland

877-204-8644
www.finesse.com